

LEVEL	REVISION DESCRIPTION	DATE	DATE	BY
A	CHANGE WIRING DETAIL VIEW	-	1/23/96	KDH
B	ADDED NOTES	1996	9/30/98	JFF
C	SHOWED WEATHER PLUG	2768	3/13/03	JFF
D	UPDATED ITEM #1	3044	12/07/03	JFF
E	CHARTED ITEM#1	3143	12/07/03	JFF
F	ADDED NOTE# 2	3183	4/21/04	JFF

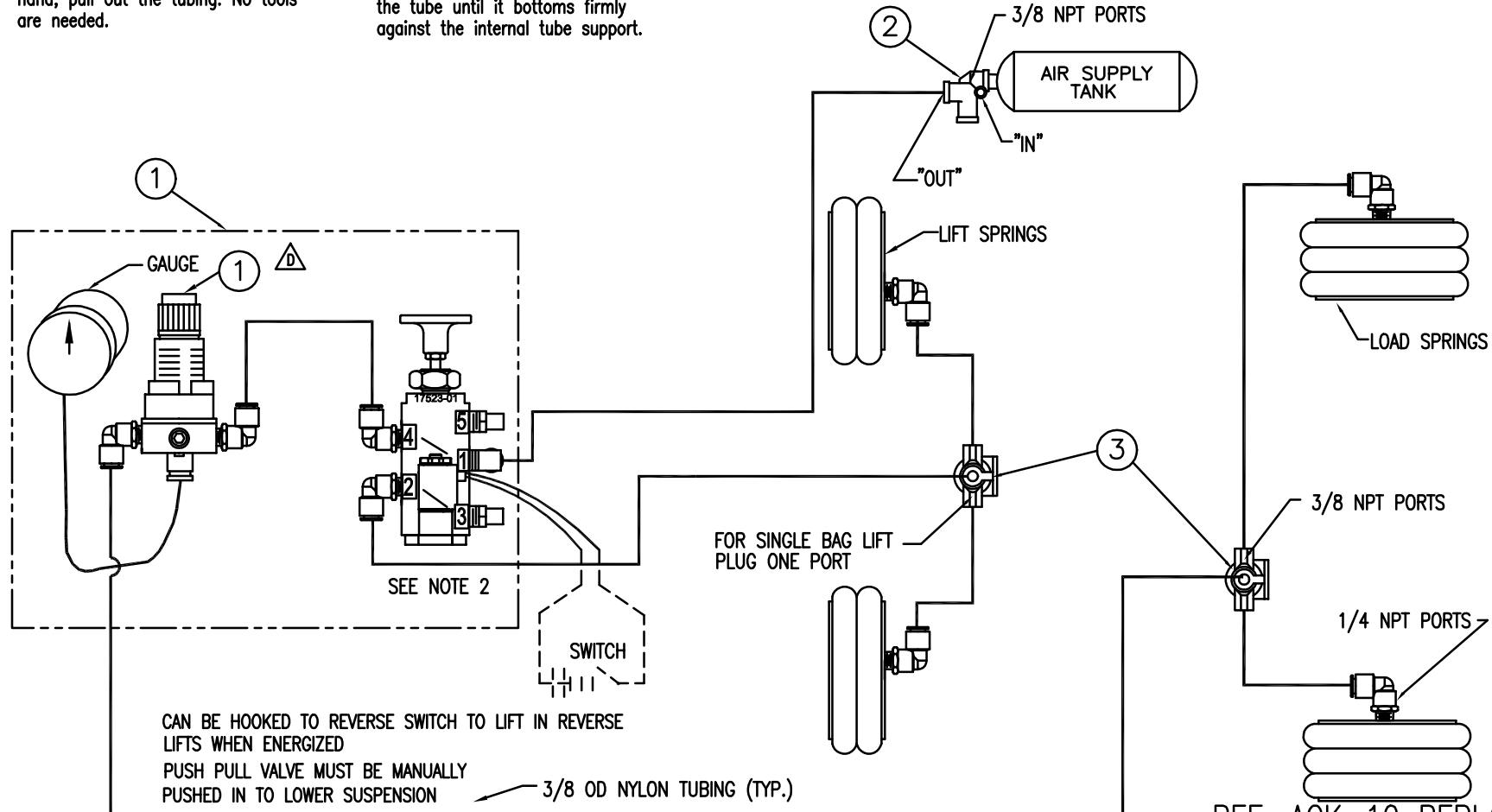
ITEM	PART NO.	QTY.	DESCRIPTION
1	CHART	1	CONTROL PANEL ASSEMBLY
2	10100	1	BRAKE PROTECTION VALVE
3	10099	2	QUICK RELEASE VALVE

TO DISCONNECT TUBE:

With thumb and forefinger, hold down the top of the insert against the fitting body and then, with the other hand, pull out the tubing. No tools are needed.

TO CONNECT TUBE:

Cut plastic tube squarely. Insert tube end into fitting, slide the I.D. of the tube over the tube support until friction is felt as tube slides past the O'ring. Using a slight twisting motion while inserting the tube is helpful. After this initial friction is felt, continue to push in the tube until it bottoms firmly against the internal tube support.



CAN BE HOOKED TO REVERSE SWITCH TO LIFT IN REVERSE LIFTS WHEN ENERGIZED
 PUSH PULL VALVE MUST BE MANUALLY PUSHED IN TO LOWER SUSPENSION

3/8 OD NYLON TUBING (TYP.)

NOTE:

- ALL NYLON TUBING AND FITTINGS FURNISHED BY CUSTOMER. (EXCEPT FOR CONTROL PANEL)
- MANUAL OVERRIDE TO BE SET TO 0 (OFF) FOR SOLENOID TO OPERATE

SEE NOTE 1

REF: ACK-10 REPLACEMENT

PART NO.	APPLICATION	ITEM #1
ACK-50	STANDARD PRESSURE	990022
ACK-50LP	LOW PRESSURE	990022-1

PART PROPERTIES		TOLERANCES (EXCEPT AS NOTED)		DESCRIPTION				
AREA	-	DECIMAL	±	MANUAL ACK W/ 12V OVERRIDE				
CUT LENGTH	-	FRACTIONAL	±	SUSPENSION MODEL	SCALE	PREVIOUS ASSEMBLY		
WEIGHT	-	ANGULAR	±	DATE	CHKD BY	DRAWN BY	SIZE	DRAWING NO.
				12/7/95	-	KDH	A	ACK-50

WATSON & CHALIN MFG., INC.