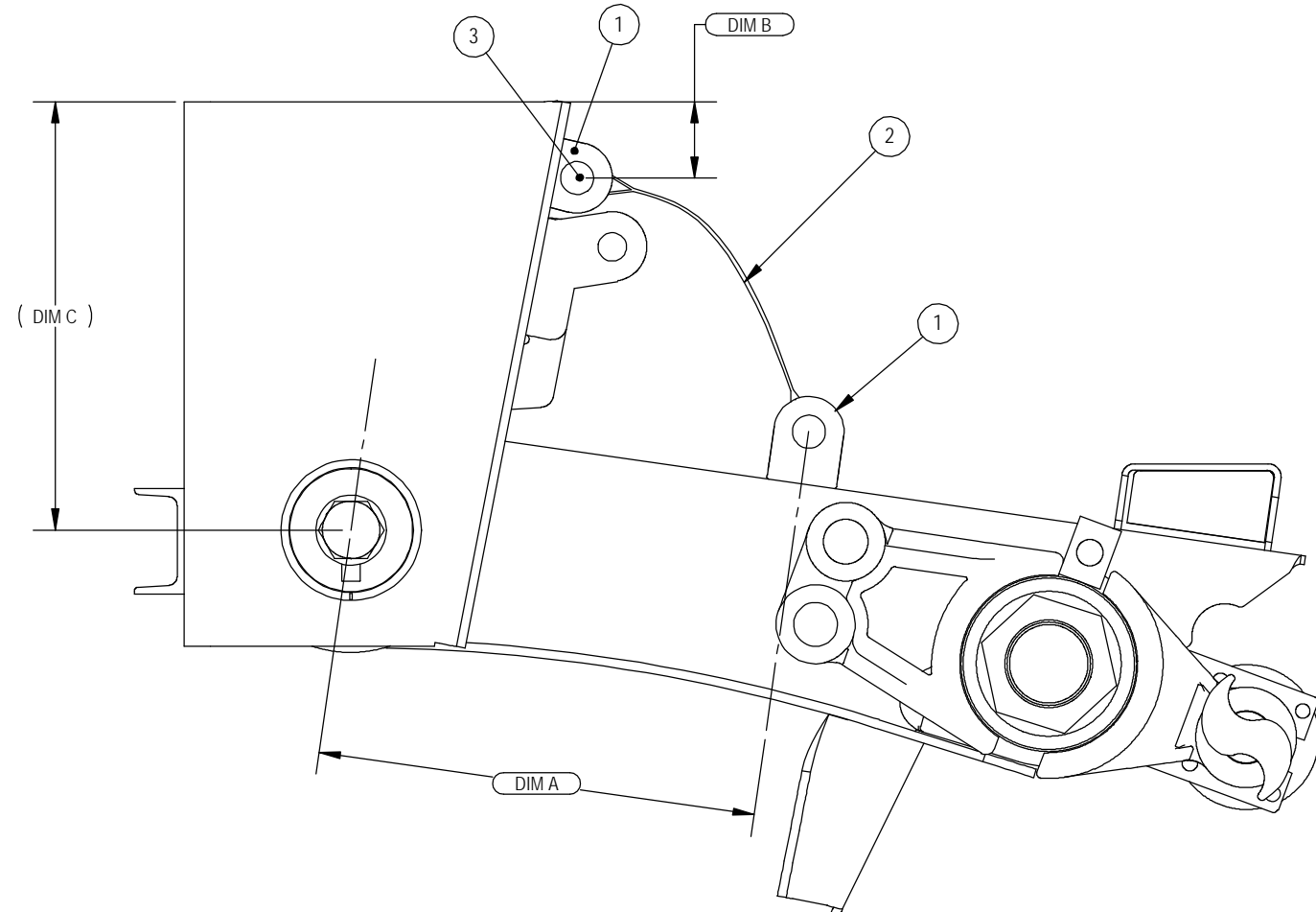


REV.	DESCRIPTION	ECN	DATE	BY
A	NEW DRAWING	C-4139	8/4/2006	TEG

ITEM NO.	QTY	PART NUMBER	DESCRIPTION
1	4	17159	SHOCK OR STRAP BRACKET
2	2	CHART	STRAP
3	1	16003	STRAP HARDWARE PACK



PART #	APPLICATION	DIM A	DIM B	DIM C	ITEM #2	LENGTH
980154-14	TI250/300T02-14	12.50	2.46	10.00	17550-01	10.50
980154-15	TI250/300T02-15		2.46			
980154-16	TI250/300T02-16		2.17	12.00	17550-02	12.07
980154-17	TI250/300T02-17		2.67			
980154-18	TI250/300T02-18		4.36	14.00	17550-03	12.07
980154-19	TI250/300T02-19		4.86			
980154-20	TI250/300T02-20		1.81	16.00	17550-04	15.62
980154-21	TI250/300T02-21		2.26			
980154-22	TI250/300T02-22		3.44	17.00	17550-05	15.62
980154-23	TI250/300T02-23		4.21			
980154-24	TI250/300T02-24	4.97	18.00	17550-06	15.62	

NOTE: PARENTHESIS () DENOTES REFERENCE DIMENSION

SPECIAL CHARACTERISTICS SYMBOL LEGEND	
(X.XX)	W/C CRITICAL DIM
** X.XX	DESIGNATES A ± .125 TOL.
* X.XX	DESIGNATES A KEY CUSTOMER CHARACTERISTIC
CHARACTERISTICS SYMBOLS	
KCC	NAVISTAR/INTERNATIONAL
K	FREIGHTLINER
M	MACK TRUCKS
C	PACCAR

COSTING INFO - WELDING	
WELD SIZE	.19
WELD LENGTH	32

DEPTS AFFECTED	TOLERANCES (EXCEPT AS NOTED)	DESCRIPTION: STRAP KIT TI250/300T02 14-24 RH	
-	DECIMAL ± .06	PREVIOUS ASSY: TI250T02	SHEET: 1 OF 1
-	FRACTIONAL ± 1/16	SUSPENSION MODEL: TI250/300T02	SCALE: 1:5
WEIGHT:	ANGULAR ± 1°	DATE: 08/04/06	DRAWN BY: TEG
		SIZE: B	DRAWING NO: 980154

